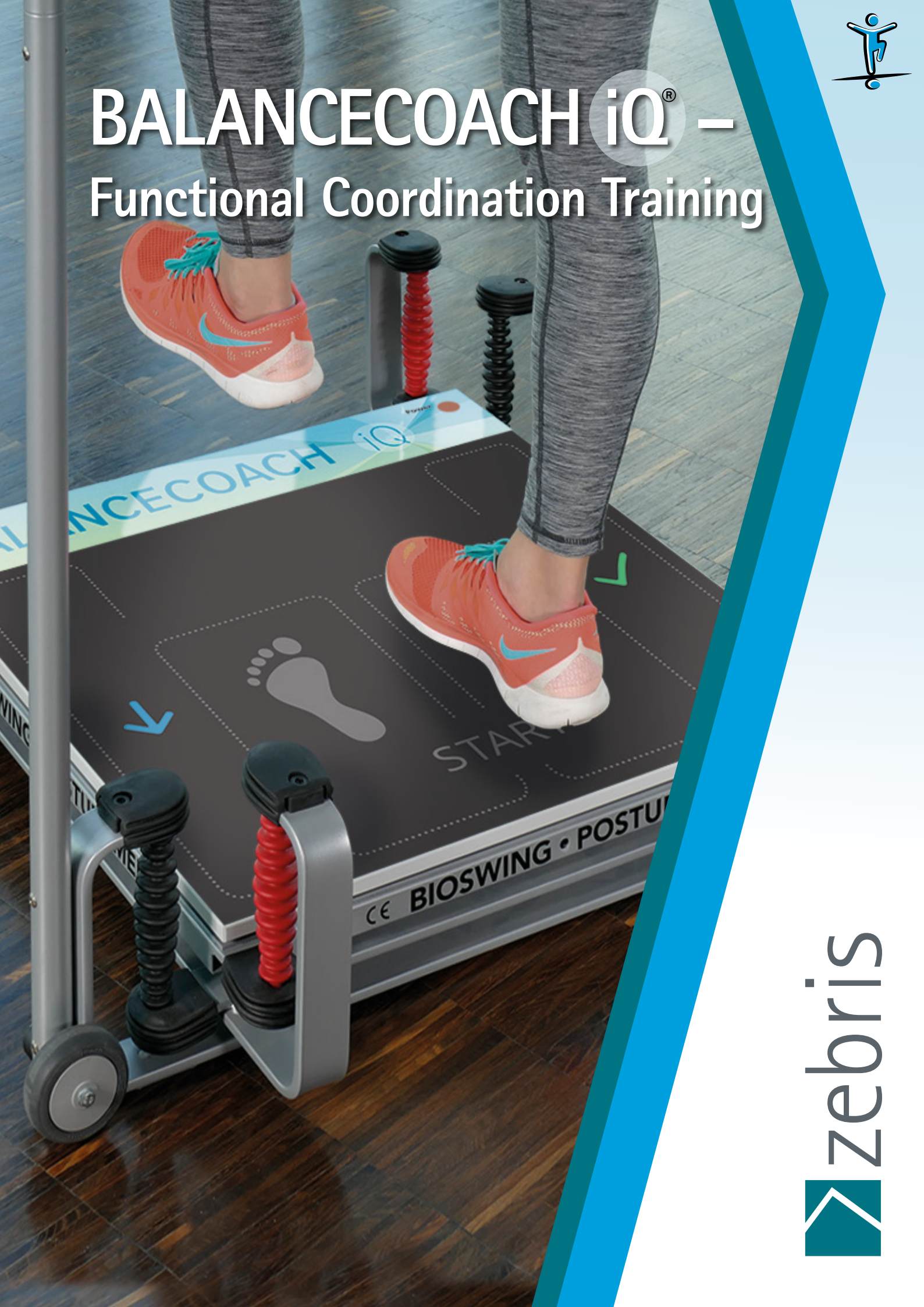




BALANCECOACH iQ[®] – Functional Coordination Training



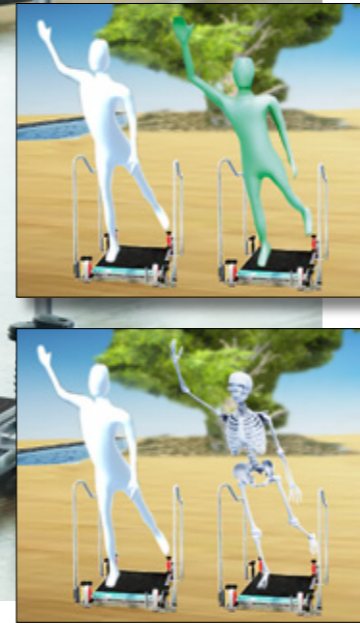
 zebris



BALANCECOACH iQ® – Intelligent Training System with Virtual Coach



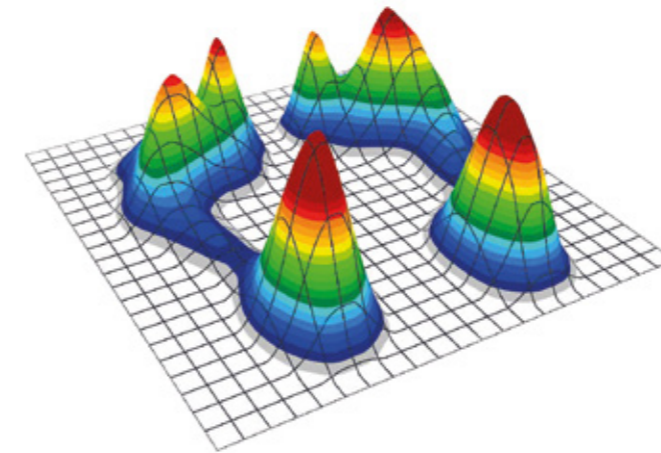
The system enables self-controlled training together with the avatar.



Ideal for your health, prevention, fitness, sports, and wellness facility

- Improved coordination at any age
- Stabilization of joints
- Valuable basic training for the entire musculoskeletal system
- Support for individual performance levels
- Injury and fall prevention

The virtual trainer guides you through the exercises. No further explanation is needed to perform them. After a short initial test and the presentation of the results, the software selects individual exercises and begins the training.



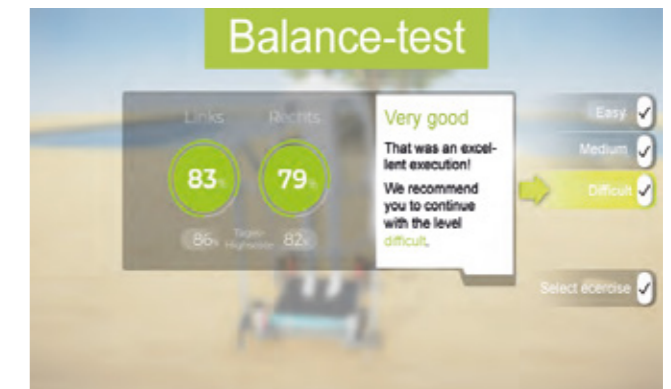
The pressure measurement plates contain high-quality capacitive sensors for precise determination of balance and movement quality.



The self-explanatory exercise preview through a 3D guide with avatar in demonstration mode.



As an alternative to a 3D camera, a video camera can be used. This is recommended when using the Posturomed® 202.



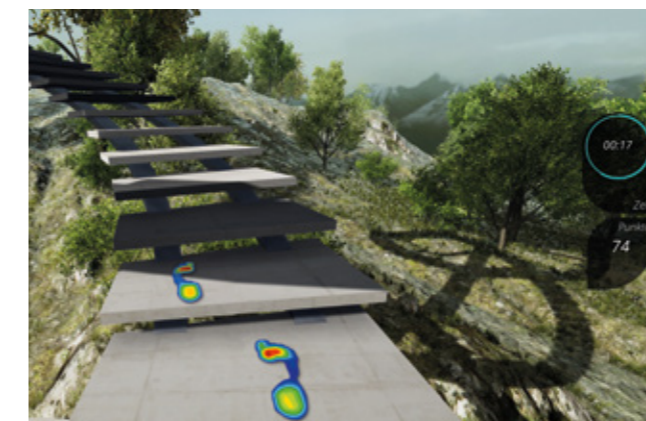
The individual performance level is displayed at the beginning and during training.

The BALANCECOACH iQ® is a software-controlled, intelligent training system with an integrated virtual trainer. It is based on the Posturomed® sensorimotor training device with an unstable, oscillating surface.

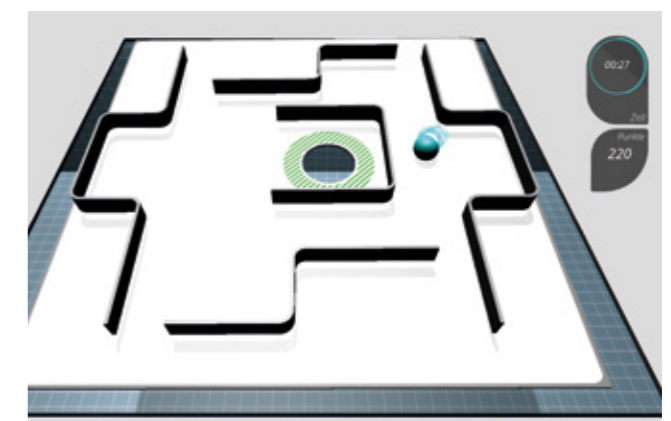
The user performs their exercises together with a virtual trainer. They can also see themselves as a video image, avatar, or skeleton, giving them direct visual feedback on how they are performing the exercises.

The pressure distribution of the person training is recorded by a measuring plate and displayed in real time. Balance ability is automatically evaluated at the end of each exercise.

In addition, the system includes four playful modules for training balance, speed of movement, and coordination in a virtual environment.



Speed training in a virtual environment



Effective balance training through weight shifting



System Components

The BALANCECOACH iQ® training system includes a measuring plate for pressure distribution measurement and an accompanying software package with 20 exercises and 4 playful training units.

The system can be supplied with a measuring stand with an integrated 32-inch screen, 2D/3D camera, and powerful embedded PC, or with an all-in-one PC with a 2D camera and removable table stand

The Posturomed® 202 BC iQ training device has a training surface that swings in all horizontal directions and can be adjusted in three stages (fixed and two swing amplitudes). Alternatively, the system can be operated with an existing Posturomed® 202. In this case, operation with a 2D camera is recommended.

Technical Data Measuring plate:

Dimensions (L x W x H):	60 x 60 x 1.6 cm
Sensors:	672
Sampling rate:	60 Hz
Measuring principle:	Capacitive
Connection:	USB

The zebris® pressure distribution measurement plate is specially designed for the Posturomed®. It is clearly divided into the central training area and the navigation area on the right and left.

The measurement results are output via a QR code.

Using the BALANCECOACH iQ® app, training success can be saved and documented.

Space requirement: approx. 2.50 x 1.00 meters

Distributed by:



©zebris 3/2026.
Subject to technical
and content changes.

zebris