

# zebris FDM

---



## Release Notes zebris FDM 3.0.x

describes changes for version 3.0.12.  
Illustrations in these release notes may differ.

© zebris Medical GmbH  
Am Galgenbuehl 14, D-88316 Isny

All rights reserved. Reprinting, even in part, is only permitted with the express permission of the zebris Medical GmbH.  
Textrelease R 6  
Status: 11/5/2024  
[www.zebris.de](http://www.zebris.de)

## Manufacturer

zebris Medical GmbH	Phone	+49 (0)7562 9726 - 0
Am Galgenbuehl 14	Telefax	+49 (0)7562 9726 - 50
D-88316 Isny	Email	<a href="mailto:info@zebris.de">info@zebris.de</a>
Germany	Internet	<a href="http://www.zebris.de">www.zebris.de</a>

## Sales

zebris Medical GmbH	Phone	+49 (0)7562 9726 - 0
Am Galgenbuehl 14	Telefax	+49 (0)7562 9726 - 50
D-88316 Isny	Email	<a href="mailto:info@zebris.de">info@zebris.de</a>
Germany	Internet	<a href="http://www.zebris.de">www.zebris.de</a>

## Support

zebris Medical GmbH	Phone	+49 (0)7562 9726 - 300
Am Galgenbuehl 14	Email	<a href="mailto:support@zebris.de">support@zebris.de</a>
D-88316 Isny	Internet	<a href="https://www.zebris.de/en/">https://www.zebris.de/en/</a>
Germany		

Please always specify the serial number of the product when making inquiries!



## Table of contents

<b>1</b>	<b>Conventions and symbolism used</b>	<b>4</b>
<b>2</b>	<b>Common</b>	<b>5</b>
<b>3</b>	<b>Database</b>	<b>6</b>
3.1	Program settings	6
3.1.1	Shortcuts	6
3.1.2	Export	6
3.1.3	Virtual devices (Player devices)	6
<b>4</b>	<b>Measure</b>	<b>7</b>
4.1	Arrange modules	7
4.2	Mirror video image	7
4.3	SYNCCam HS 90	8
<b>5</b>	<b>View</b>	<b>9</b>
5.1	Video drawing tools	9
<b>6</b>	<b>Report</b>	<b>10</b>
6.1	Spectrogram for Stance Analysis	10
6.2	Video sequences	11
6.3	Insert image	12
<b>7</b>	<b>Bugfixes</b>	<b>13</b>

# Conventions and symbolism used

## 1 Conventions and symbolism used

The following conventions are used in these Release Notes.

### Warnings are marked as follows:



Warnings designate a potential hazard to the health and safety of users and/or patients. The warnings explain the nature of the hazard and how it can be avoided.

### Hints are identified as follows:



Hints designate a potential danger that can lead to damage or destruction of the device. The notes explain the type of hazard and how it can be avoided.



Notes that are relevant to the measurement procedure are marked in this way.

### Note on changes

To ensure our product quality, we are constantly striving to further improve our product line. There may have been an update to the software or hardware configuration after this Release Notes went to press. Therefore, some of the illustrations may differ from what was actually delivered to you.



Please note that a new version of this Release Notes does not appear for every software release, as technical changes that are not visible to the user are often made in releases. The latest version of the operating instructions is available from your dealer.

## 2 Common

### PC system requirements

From version 3.0.12 the system requirements for the measurement PC have changed.

You can find the current system requirements on the zebris website under **Service / PC specifications / zebris FDM 3.0.x**.

### Progress bar for export

The software now displays a progress bar when loading the export dialogs so that the waiting time can be better estimated, especially for larger data sets.

### Input fields

Decimal separator can now be a point or a comma, a comma number is always recognized as such.

### Timeline

The timeline has been adapted to simplify operation of the software via touchscreen. It is now possible to jump to a point in time by tapping on the timeline and the triangle that marks the current time position has become larger and therefore easier to touch. The timeline has been set off to the left and right so that it is possible to move your finger more precisely to the edge.



## 3 Database

### 3.1 Program settings

#### 3.1.1 Shortcuts

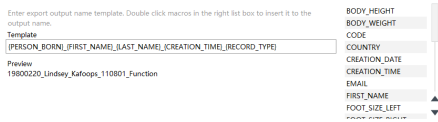
Actions	Shortcuts assigned
<b>3D controls</b>	
Rotate	Left mouse button drag
Zoom	Mouse wheel
Move	Right mouse button drag
<b>General navigation</b>	
Next	Key d
Back	Back

#### Keyboard shortcuts

Several mouse actions can now be assigned to the 3D control elements; combinations with the Alt, Shift and Ctrl keys are possible.

For the first time, it is possible to assign any key to the general navigation.

#### 3.1.2 Export



#### Naming exports

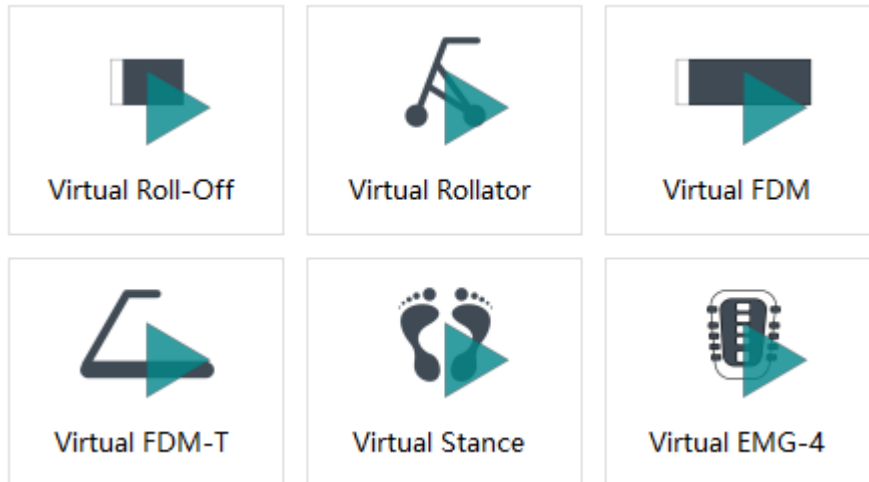
An individual template for naming exports can be created from a list of macros in the program settings under **Export**.

**NEW:** All fields available in the patient file can now be used for the template.

#### 3.1.3 Virtual devices (Player devices)

Under **Program settings > Common**, you can select whether the virtual devices (player devices) should be displayed in the hardware setup.

They are displayed there as follows:



The virtual devices are real recordings that are played back and generate inputs instead of a physical device. You can add the devices in the device settings.

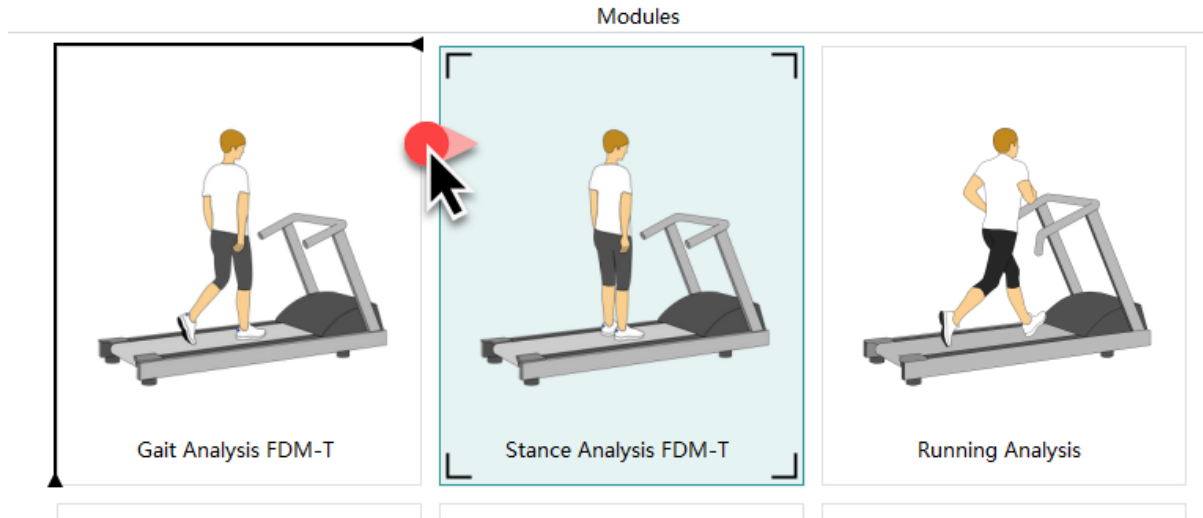
# Measure

## 4 Measure

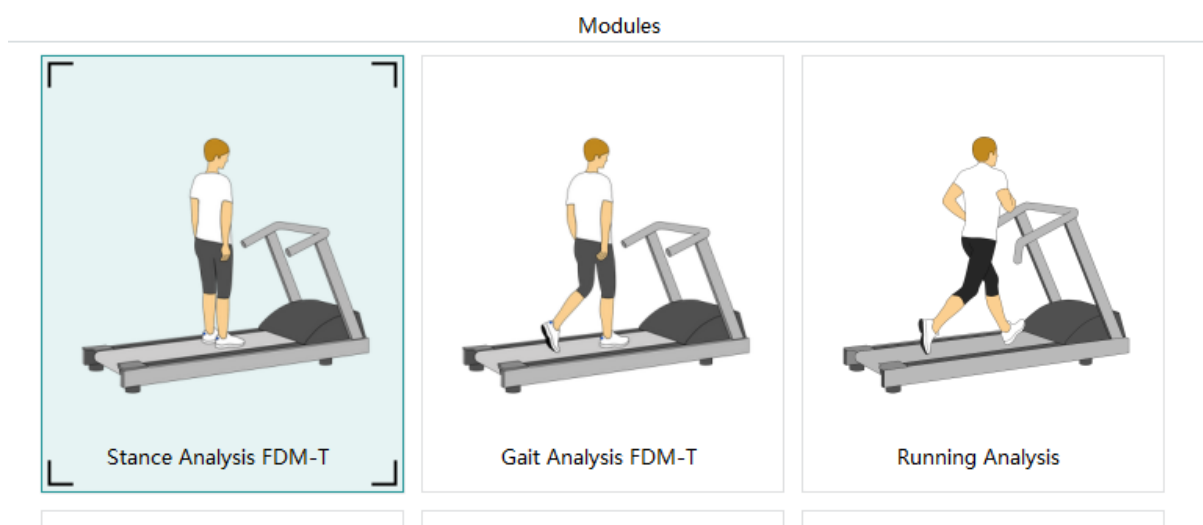
### 4.1 Arrange modules

Measurement modules can now be rearranged using drag & drop with the left mouse button.

Before:



After:



### 4.2 Mirror video image

The camera image can be mirrored horizontally in the device settings. To do this, activate the corresponding checkbox in the camera settings:

Basic	Advanced
Name	SYNCCam
Rotate	Video rotation: no
Mirror the video image horizontally	<input checked="" type="checkbox"/>
Exposure	<input type="checkbox"/>
Gain	<input type="checkbox"/>

## 4.3 SYNCCam HS 90

SYNCCam HS 90 is supported from version **3.0.10**.



Possible formats are:

1280x720 Pixel (HD) à 90 fps

1920x1080 Pixel (Full HD) à 60 fps



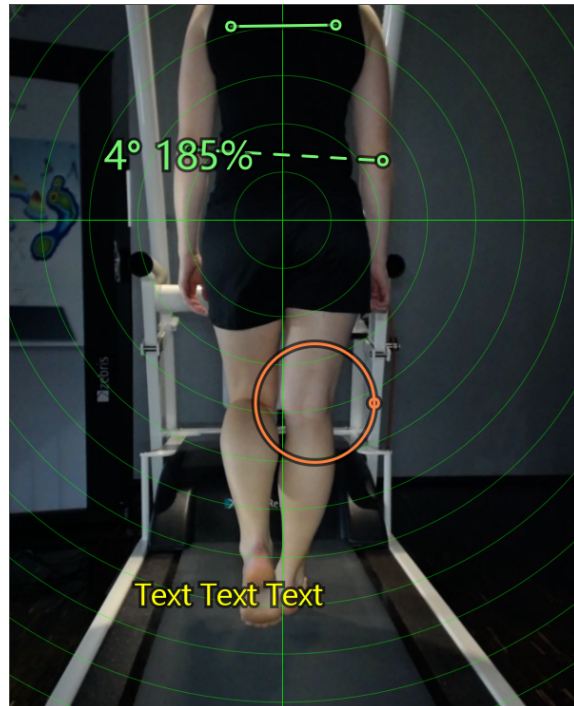
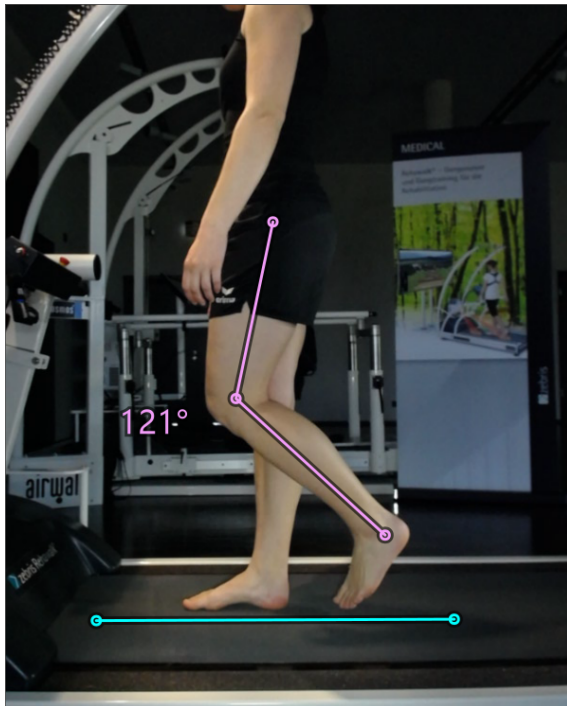
## 5 View

### 5.1 Video drawing tools

The drawing tools for marking on video images have been expanded.

In addition to the familiar function for drawing angles and ratios, there is now a circle, 3-point angle, a line and freely placeable text.

Color, line thickness and text size are adjustable.



# Report

## 6 Report

### 6.1 Spectrogram for Stance Analysis

A spectrogram for the COP (Center of Pressure) values has been added to the Stance Analysis reports.

A spectrogram shows the frequency content of a signal over time.

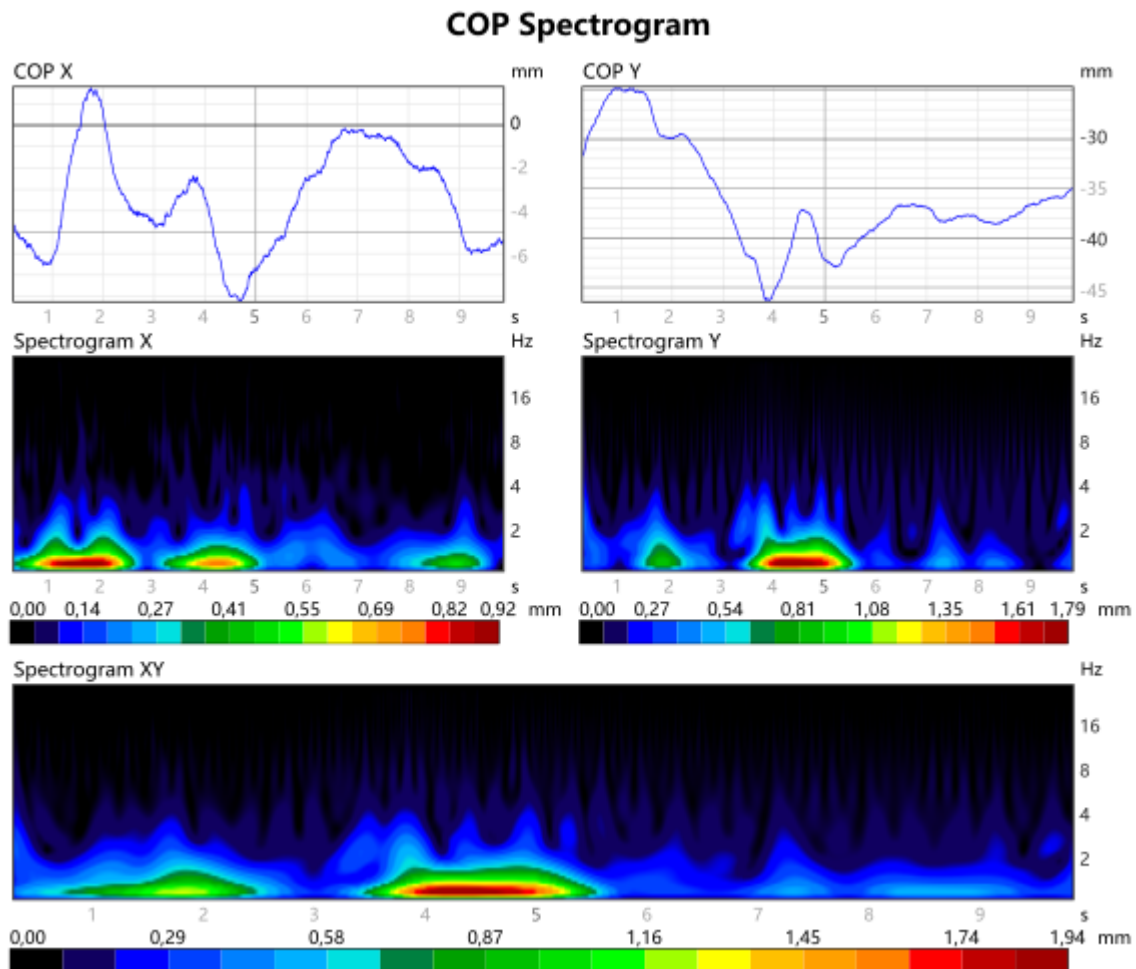
In the case of a COP spectrogram, the analyzed signal is the change in the COP position as a function of time.

The spectrogram shows how the position of the COP changes from one moment to the next over a range of frequencies. It therefore reflects how often the COP position changes.

The **X-axis** shows the time and indicates at which point in the recording the data was captured.

The **Y-axis** represents the frequencies found in the COP signal at each point in time.

The **Color Intensity** at each point in the spectrogram represents the amplitude of the observed frequency at that particular point in time.



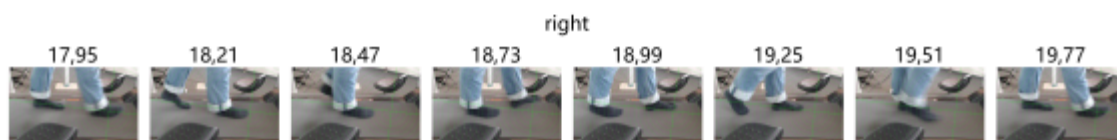
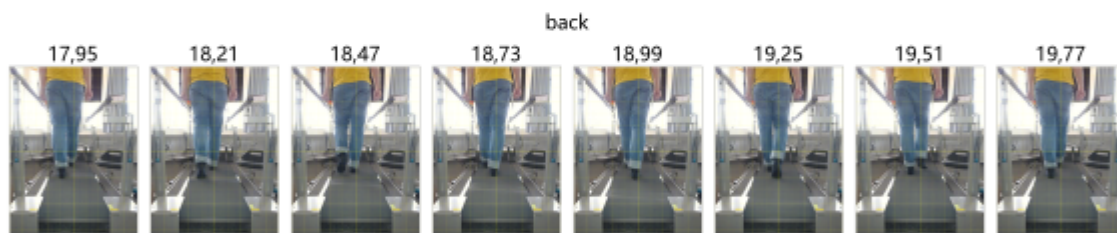
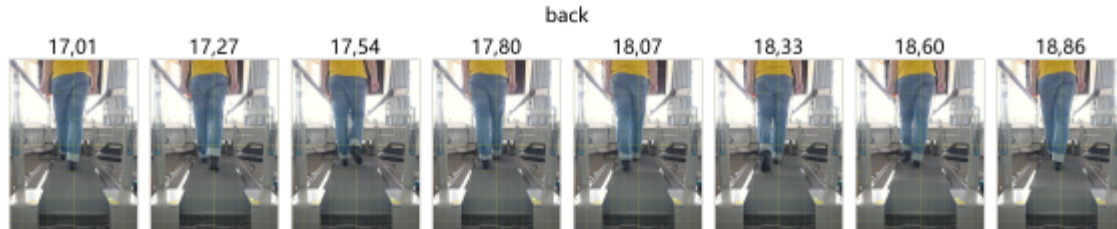
# Report

## 6.2 Video sequences

In addition to the previous view by device, a view by time is now also provided.

Parameters allow the configuration of the image height, as well as the number of video images per line and how many lines per device should be directly below each other.

**Example: Image height 50 (mm), 8 images per line, 1 line per device below each other.**

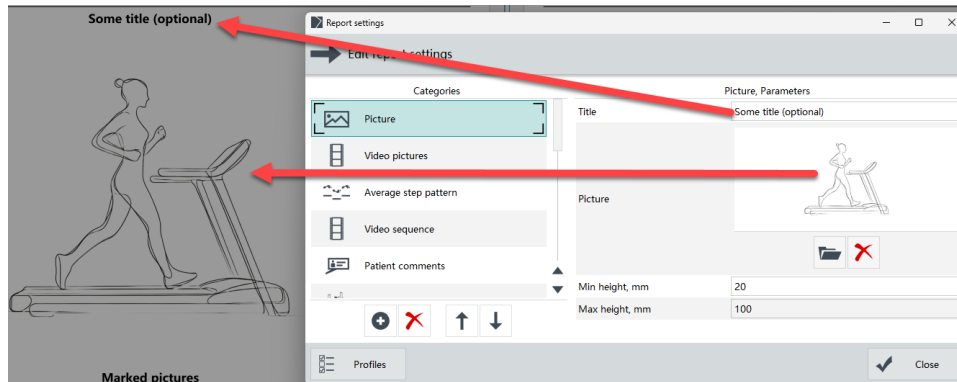


# Report

## 6.3 Insert image

Any image in jpg or png format can be added to the report via **Customize**.

The displayed image height can be restricted (minimum and maximum height, aspect ratio is retained) and an optional heading can be defined.



# Bugfixes

## 7 Bugfixes

The following is a list of fixed errors since the last software version.

Patch	Description	SUP	
3.0.0	<b>Activation dialog: the Copy button is empty</b>	Display of the "Copy" button with text and symbol corrected	
	<b>Device settings: Cancel does not undo the changes</b>	When clicking Cancel in the device settings, the changes made are now discarded.	
	<b>Device settings: Use of multiple synchronized pressure plates</b>	An error when adding multiple pressure plates has been fixed.	
	<b>DigiPED: Use of scanners from other manufacturers</b>	Tolerance of negative size specifications when processing DIB (Device Independent Bitmap).	
	<b>DirectShow: Gain is not applied</b>	The setting for the "Gain" value is now applied correctly.	
	<b>Export: "Select all" only applies to the patients displayed during filtering</b>	"Select all" now only includes all patients found by the filter/search	
	<b>Fast restart leads to error</b>	If the application is restarted, a check is now carried out to see whether an instance of the application still exists in memory (i.e. is currently being closed). If the application has not yet been completely closed, a message is displayed.	
	<b>FullHD videos: Crash when loading rotated videos</b>	Fixed crash when loading rotated videos with 1920x1080 pixel resolution.	
	<b>Graphical user interface: flickering when resizing</b>	Flickering (due to redrawing) when resizing elements has been reduced.	
	<b>Hardware setup: Video format</b>	Default settings for video format and resolution are now set using an ID, as the previously used format index can differ between camera series.	
	<b>Import: Files imported without extension</b>	It is now ensured that the extension is retained when importing files.	
	<b>Multi-CSV export: Export blocks the database</b>	When exporting multiple data sets to a CSV file, the database is no longer blocked.	
	<b>Program settings: Report logo</b>	Resetting the report logo to the default logo caused a crash.	
<b>Report: Export button exports last selected profile</b>	The export button in the report function now exports the currently selected report profile (previously the last selected profile was always exported).		

## Bugfixes

	<b>Single measurement application leads to crash</b>	Fixed software crash when switching to "Measure" mode if only a single measurement application is enabled.	
	<b>System folder / Windows macros</b>	Fallback for incorrectly configured system folders or folder macros in Windows.	
	<b>Video display: incorrect aspect ratio</b>	Videos were displayed in the view with the wrong aspect ratio and were only corrected when the size/zoom was changed	
<b>3.0.2</b>	<b>30 demo launches are available again</b>		
<b>3.0.4</b>	<b>LiveGait: No value is displayed for foot rotation</b>	The values in degrees are now displayed again in addition to the bars.	
	<b>Gait analysis FDM: Missing standard deviation</b>	For intervals with only two contacts, not all contacts were included in the evaluation.	SUP-6523
	<b>SYNCLIGHTCam HS: Cannot be initialized</b>	When using SYNCLIGHTCam HS cameras, the necessary .dll files are now installed again.	
	<b>BalanceBoard: Does not start in foreign languages</b>	For users who use the FDM software in languages other than german, the BalanceBoard application is automatically started in English.	SUP-6639
	<b>APD Export: Software crash</b>	An APD export can now be carried out without errors for recordings with only one measurement interval	SUP-6560
<b>3.0.6</b>	<b>French: Unit translated incorrectly</b>	In French, the unit N/cm <sup>2</sup> is correctly indicated again	SUP-6694
<b>3.0.8</b>	<b>LiveMode: Incorrect values for contact time and flight time</b>	In LiveMode, incorrect values for contact time and flight time could occur briefly during the running analysis.	
	<b>zebris FDM Sport: Reversed change of program data path</b>	The path to the database of the Sport version of the zebris FDM software had changed in previous 3.0.x versions. This change has now been reversed.	
	<b>DigiPED: COM error when first starting the measurement module</b>	The DigiPED modul now can be started at first try without error.	
	<b>Gait Analysis: Adding pictures from poses to report</b>	Adding pictures from poses to the report is now possible by using the mark picture button.	
	<b>Running analysis: Opening the report leads to a software crash</b>	When opening running analysis reports, the software crashed sporadically.	SUP-6746
	<b>Backup: Importing the 32-bit database fails</b>	Databases of the 32-bit versions can now be imported again directly from the ProgramData folder via the zebris.fdm.data file.	
<b>3.0.10</b>	<b>French translation corrected</b>		SUP-6747 SUP-6750
	<b>LiveMode: Incorrect values for steps per minute</b>	The calculation of steps per minute in LiveMode has been revised for running	SUP-6263

## Bugfixes

		speeds.	
	<b>Camera synchronization improved</b>	The detection of the flash for the synchronization of SYNCCams with the pressure data has been revised.	
	<b>SaniVision export: Blank image</b>	The jpg transferred to SaniVision is no longer empty	
	<b>Drawing functions revised</b>	The drawing functions have been revised with regard to user-friendly application.	
	<b>PAEDUS Export: Date format fixed</b>	The format of the date transferred during import must be yyy-mm-dd.	
3.0.12	<b>Roll-off analysis report: Missing COP velocity</b>	In the COP velocity graph, the right graph was partially missing.	SUP-7088
	<b>Translation into Czech has been added</b>		
	<b>Italian translation corrected</b>		SUP-7022
	<b>DigiPed: Scanner search accelerated</b>		